

DS01 ASM Firmware

User Guide

Make sure the HDD dock access in your computer system before following below steps:

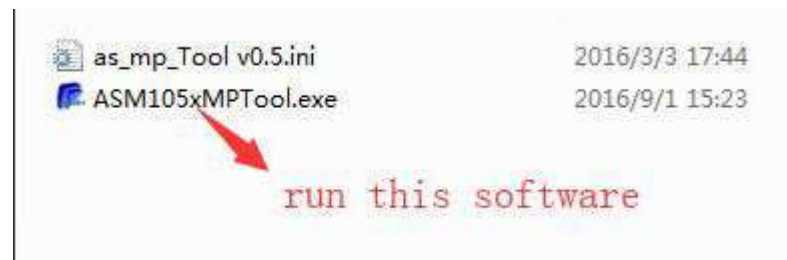
Download the updated software from the following URL

<https://www.rshtech.com/download/>

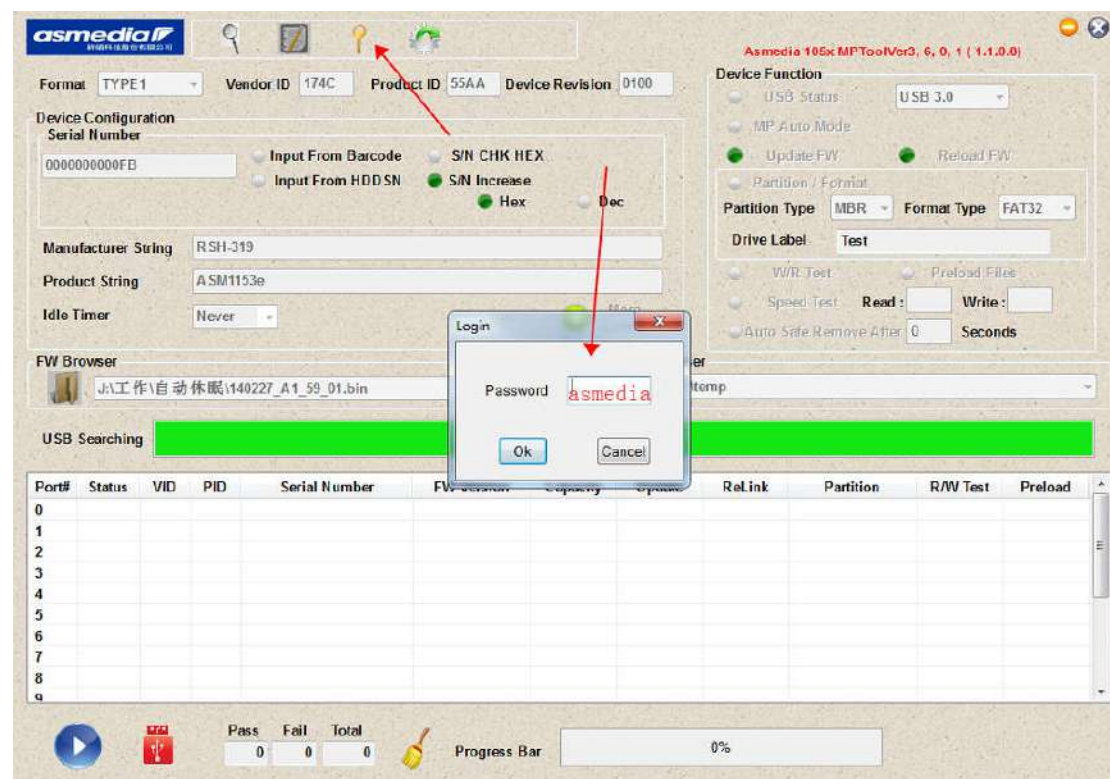
and put these 2 documents in the same file

161212_BD_61_20.bin
20160901_ASM105xMPTool_v3601.rar

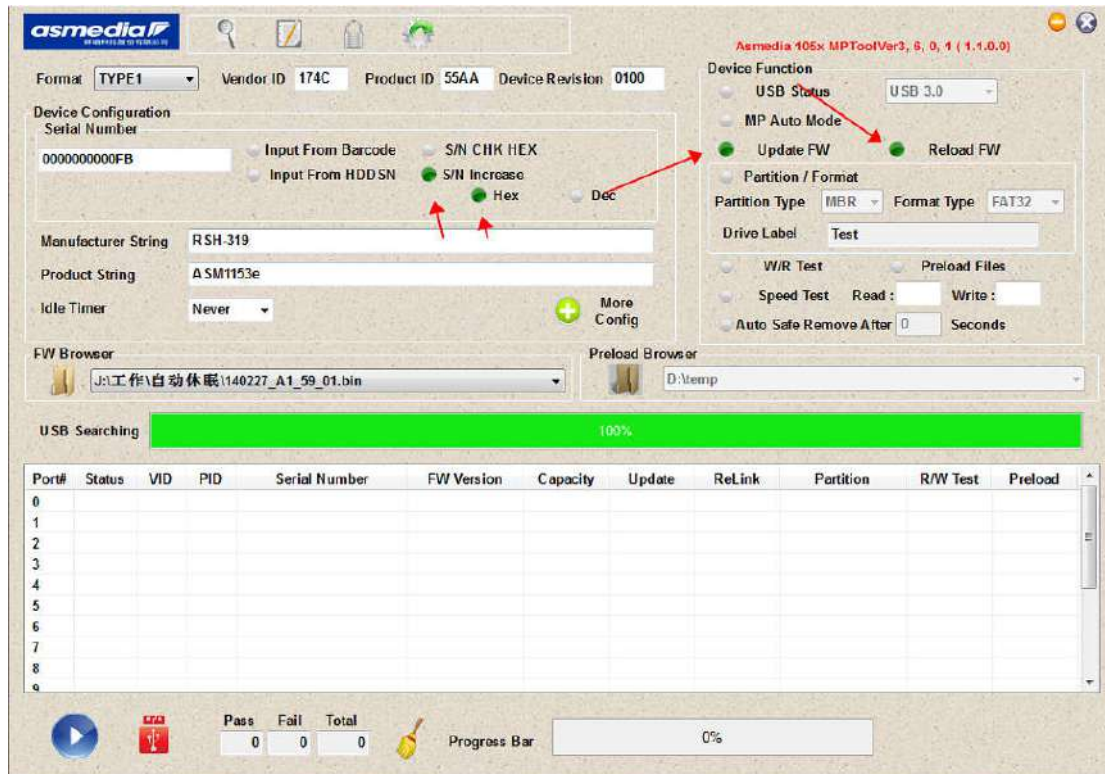
1) Unzip the rar and click the ASM105xMPTool.exe in it



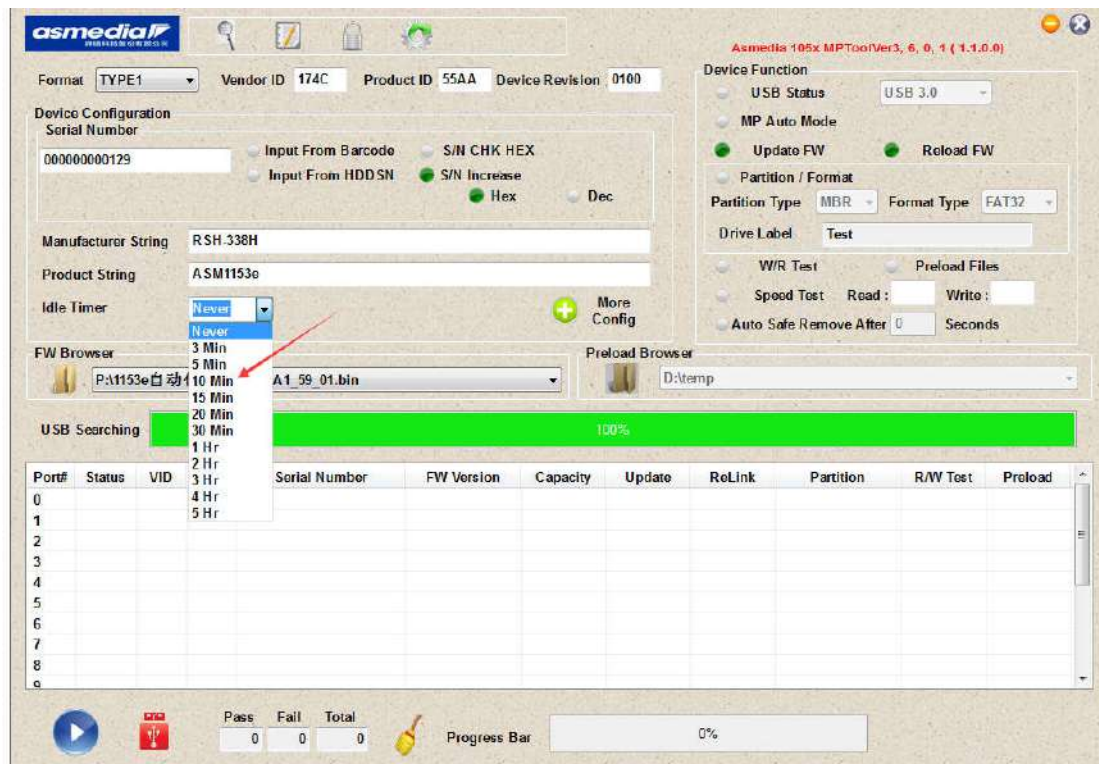
2) Enter the password "asmedia"



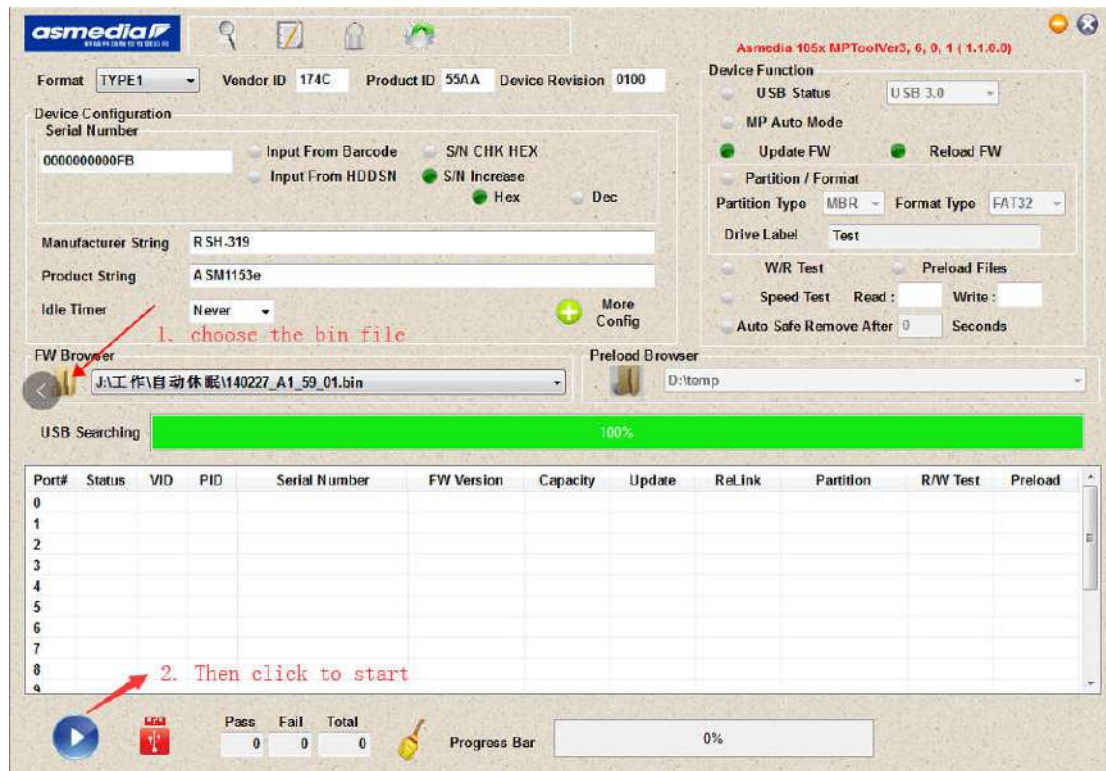
3) Follow the red arrow, make sure light up the correct button



4) Select the time in the drop down option of "IdleTimer".



5) Select the “161212_BD_61_20.bin” file in the “FW Browser” to start



It will show “pass” if succeeded.